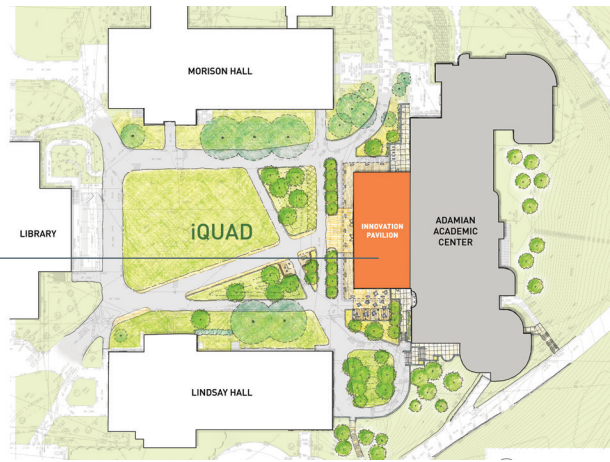


Adamian Academic Center, Reimagined





THE CENTER OF UPPER CAMPUS

The Adaman project will anchor the planned iQuad, serving as the vibrant epicenter of upper campus. Integrating seamlessly with the existing landscape design and architecture, the Innovation Pavilion's impressive facade will serve as an inviting window to the dynamic activity within. A new café will provide a welcoming spot for students and faculty to connect and recharge.



An aerial photograph of a university campus, overlaid with a semi-transparent blue filter. The image shows various campus buildings, a large parking lot on the left, a central green lawn area, and a prominent building with a clock tower on the right. The text is centered over the image.

Building on Success: Proven by the Numbers

#8

**greatest return on
investment among U.S.
colleges and universities**

Georgetown University
Center of Education and
the Workforce report, 2022

#1

**most innovative
school in the north**

*U.S. News & World Report,
2025*

#4

**earnings after graduation
among all colleges in the U.S.**

The New York Times, 2023

#11

best colleges in the U.S.

The Wall Street Journal, 2024

97-99%

**of Bentley graduates employed
or enrolled in graduate school
within six months of graduation
for over 15 years**

#1

best career services

The Princeton Review, 2024

Technology, Innovation and Entrepreneurship at Bentley: It's Just Good Business

Technology is a constant disruptive force. When leveraged for good, it not only creates new opportunities for businesses to thrive, but also positively impacts lives and communities.

Today, we find ourselves at the dawn of a new innovation age, one marked by the rapid adoption of artificial intelligence (AI), massive amounts of data, powerful computation and the ability to meld the physical and the digital worlds through virtual and augmented reality.

Bentley has led the way, adapting education to the forces that shape the future of business. Our history is proof: We pioneered experiential learning with our state-of-the-art Trading Room. We equipped every student with the technology and tools needed to thrive — like laptops — before anyone else did. We listened and learned, engaging deeply with the business community to understand the challenges and opportunities of the global economy.

Because of this, Bentley has an enviable track record of delivering unrivaled learning and career outcomes to our students. This is reflected in recent data and in our rankings among the best schools in the country.

At Bentley, we don't stand still — we engage with the world. We adapt, we change and we respond to forces shaping business and society. We do this to ensure our students are equipped with the durable skills necessary to compete and thrive in an ever-changing world marked by constant technological disruption.



Learning in the Innovation Age

There's no way around it: The world looks different than it did 20, 10, even five years ago. With access to all the world's knowledge just a Google search away, it's not enough for our students to remember or recall classroom knowledge. The world needs a new type of business leader. An actionable leader. A decisive leader. An agile leader. Today's students need to develop durable skills that differentiate them from the rest. They need the ability to work with imperfect data to develop a point of view, the ability to communicate their ideas, the ability to solve complex issues and the ability to work in teams. They need real-world experience.

At Bentley, we believe that the business theory and principles our students learn in the classroom hold great value — it's the foundation upon which their careers are built. But to excel in this new age, they need to master durable skills like critical thinking, resilience, effective communication and solutions-based problem solving.

In doing so, they will be able to do more than evolve with the world — they will emerge as the entrepreneurial leaders and business innovators needed to address and solve our greatest societal issues, paving the way at the intersection of business and technology.

To develop and hone these durable skills, our faculty go beyond educating our students to empowering them — equipping them with the knowledge, skills and hands-on

training to ignite positive, lasting change. This demands that the Bentley education evolves, and our learning spaces must adapt to support new modalities of teaching and research.

The Technology, Innovation and Entrepreneurship Initiative is Bentley's response to the call for a generation of business leaders who will thrive in an ever-changing business landscape. We cannot control the rate of change across global markets, but we can prepare tomorrow's leaders with the knowledge, training and vital skills to lead the way — by harnessing the power of new technologies, implementing AI and data in novel but responsible ways, and most importantly, solving for problems we have yet to encounter as decisive, responsive and innovative problem solvers.

Future Proofing Starts With Innovation Excellence

Innovation is at our core. We are committed to impact, outcomes and successes that solve complex human problems and accelerate positive change.

Today, our students and faculty are being asked to innovate in a world shaped by the power and potential of emerging technologies and AI. They must remain nimble, forward-thinking and anticipate tomorrow's greatest challenges today.

How do we prepare our students for this monumental task? It starts here.

Catalyzing a Transformation

Fostering a culture of innovation and entrepreneurial ingenuity is what sets our institution apart — it's what empowers our graduates to use their knowledge and skills to drive economic growth, create positive impact and contribute to societal progress.

Now, with your support, we have opportunities to strengthen this culture by catalyzing a transformation right here on campus, one that equips our students with the resources, academic training and immersive learning experiences that will prepare them to drive positive change — in their industries and in society.

Adamian Academic Center: Bringing Business to Life

The newly reimagined Adamian Academic Center plays a key role in realizing our vision to fuel technology, innovation and entrepreneurial excellence at Bentley. Through improvements and updates to the building's footprint and usage, we will create a destination for knowledge, innovation and collaboration for Bentley's students and faculty.

In addition to enhanced workspaces for faculty and gathering spaces for students, both intentionally designed to foster increased collaboration across disciplines, Adamian will be anchored by signature spaces that will allow our students to explore the intersection of business, technology and innovation firsthand.



As a leading business university in this Innovation Age, Bentley must equip students with more than knowledge – we must empower them with the cutting-edge tools and resources to navigate and shape tomorrow’s business frontier.

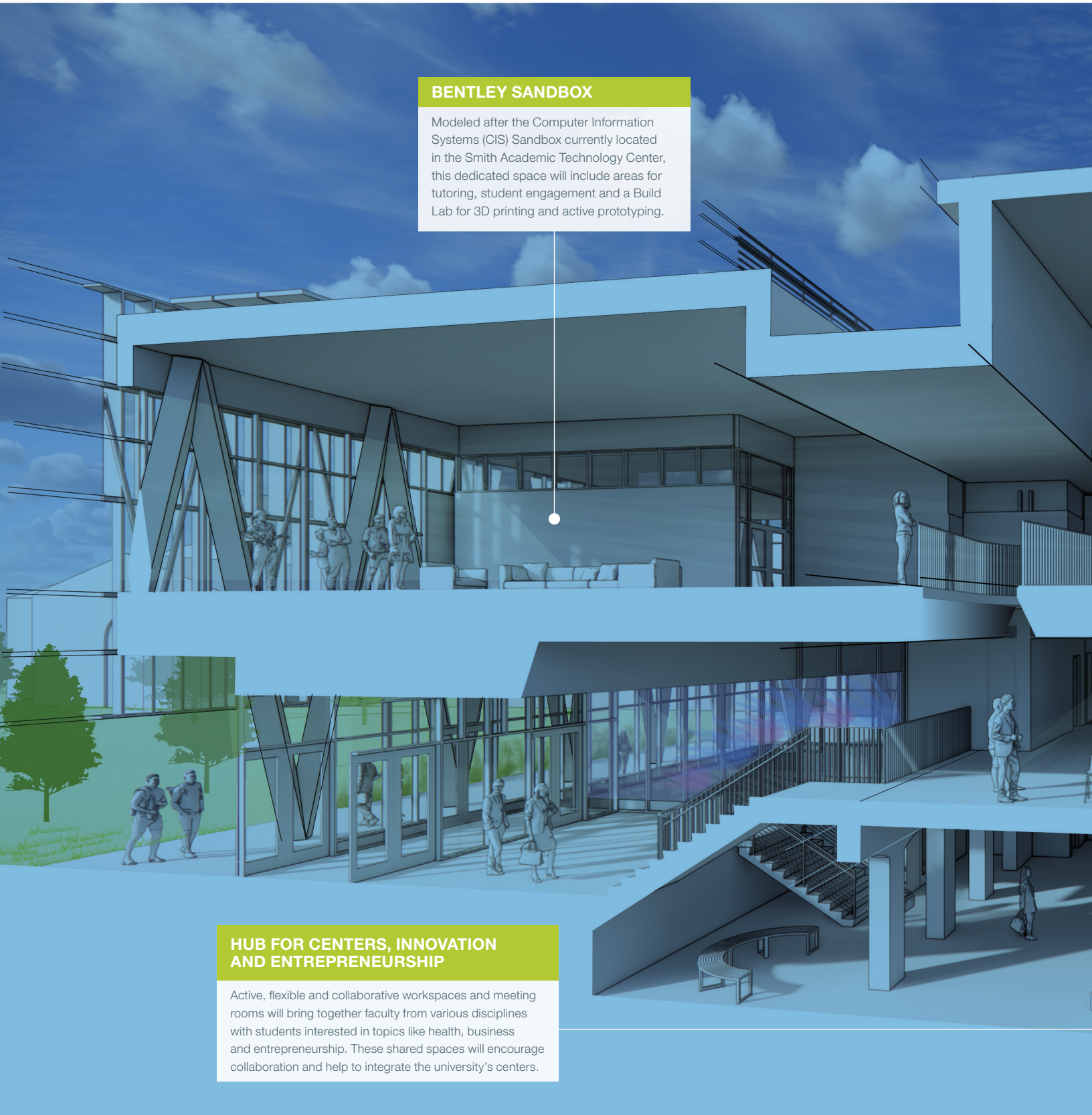
E. LaBrent Chrite, PhD
President

BENTLEY SANDBOX

Modeled after the Computer Information Systems (CIS) Sandbox currently located in the Smith Academic Technology Center, this dedicated space will include areas for tutoring, student engagement and a Build Lab for 3D printing and active prototyping.

HUB FOR CENTERS, INNOVATION AND ENTREPRENEURSHIP

Active, flexible and collaborative workspaces and meeting rooms will bring together faculty from various disciplines with students interested in topics like health, business and entrepreneurship. These shared spaces will encourage collaboration and help to integrate the university's centers.

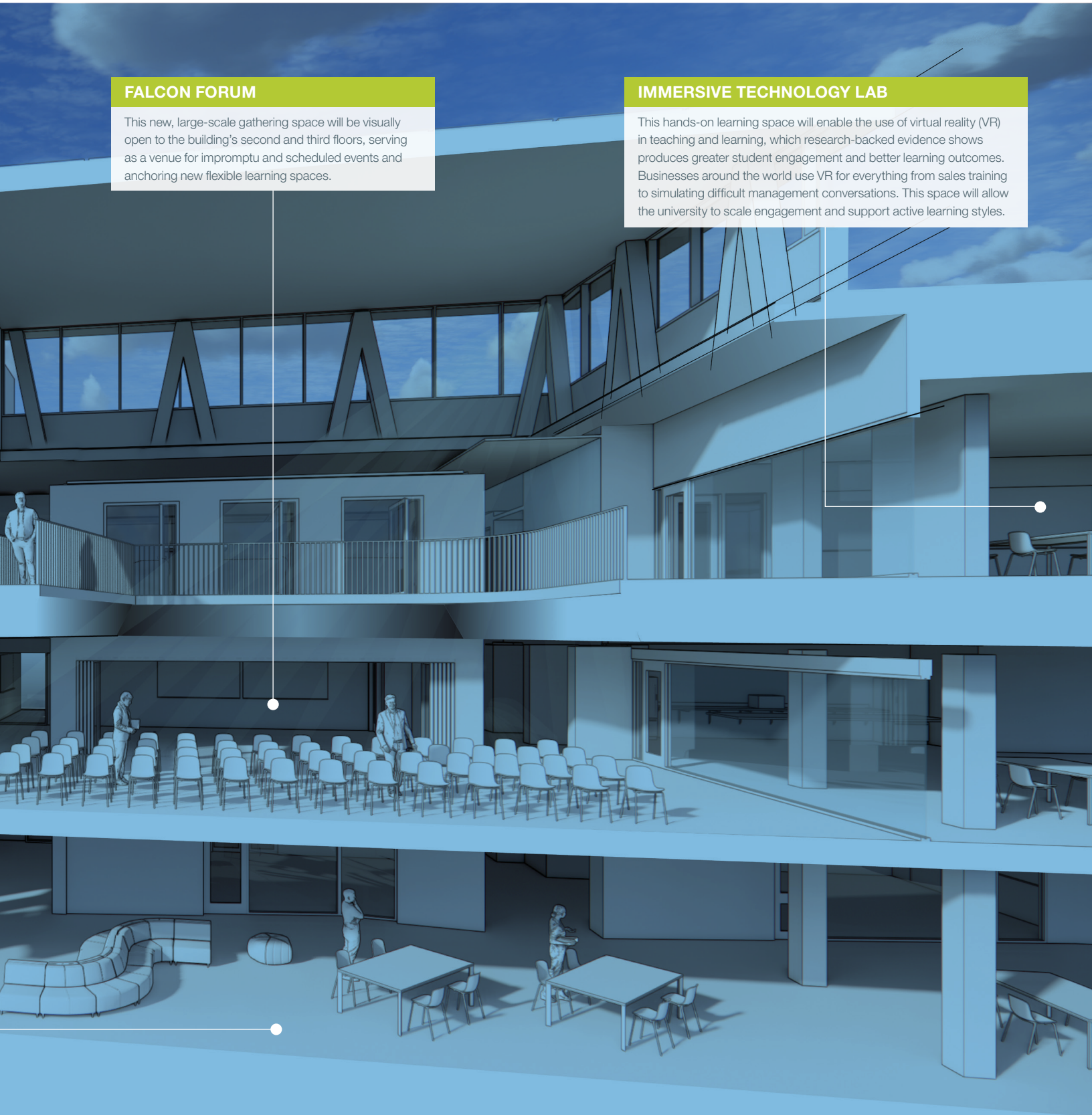


FALCON FORUM

This new, large-scale gathering space will be visually open to the building's second and third floors, serving as a venue for impromptu and scheduled events and anchoring new flexible learning spaces.

IMMERSIVE TECHNOLOGY LAB

This hands-on learning space will enable the use of virtual reality (VR) in teaching and learning, which research-backed evidence shows produces greater student engagement and better learning outcomes. Businesses around the world use VR for everything from sales training to simulating difficult management conversations. This space will allow the university to scale engagement and support active learning styles.



FUTURES LAB

This innovative academic space will be designed to integrate cutting-edge business research with dynamic, visually immersive experiences, offering flexibility to support a wide range of learning activities.



BUILD LAB

Adding new capabilities and hands-on environments is a focus of the reimagined Adarnian, like this Build Lab, where 3D printing and active prototyping will be made possible.



Investing today in technology, entrepreneurship and innovation will continue to propel Bentley students forward in the rapidly evolving landscape of the modern business world.

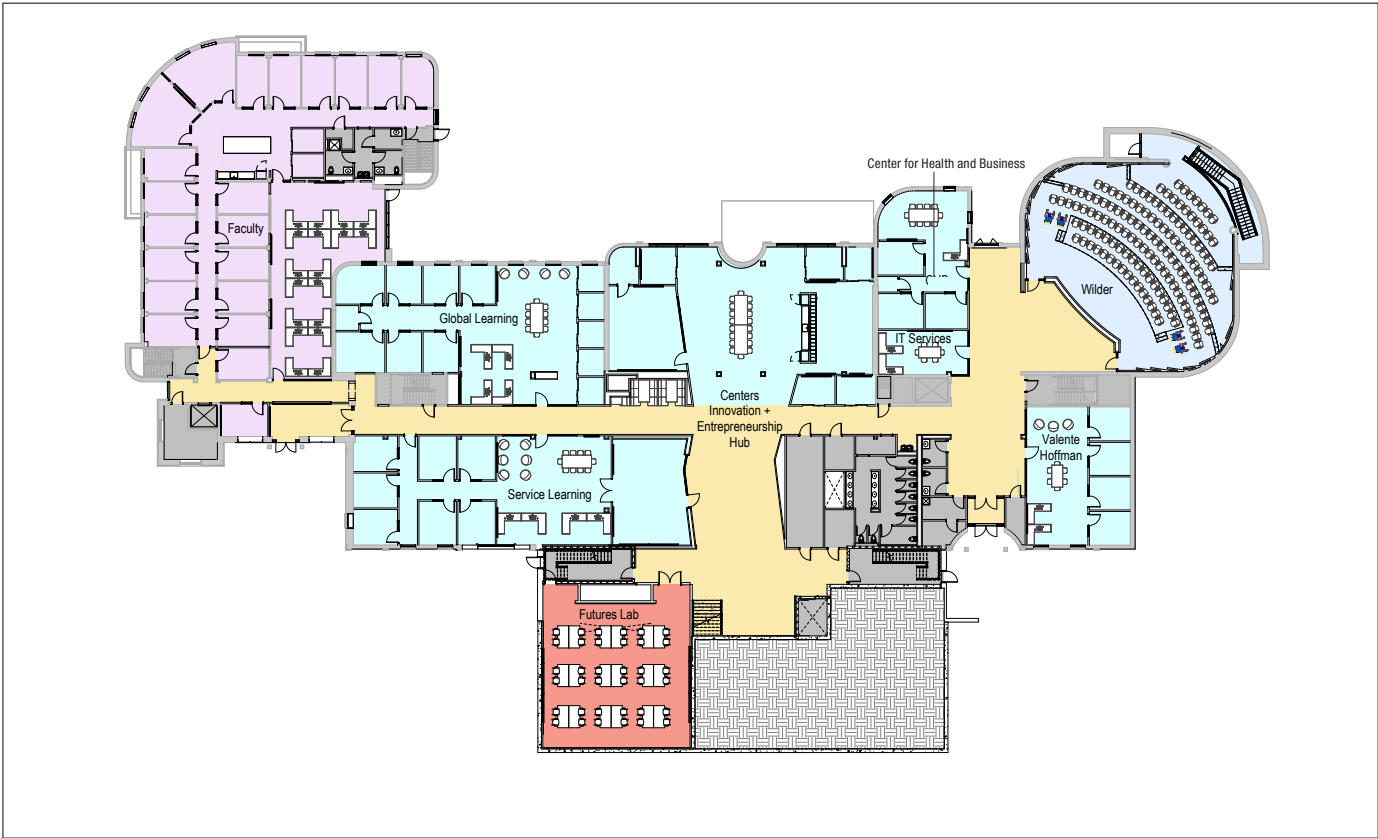
Sheila Harrington '87
Healthcare Partner, KPMG US
Member, Bentley President's Council



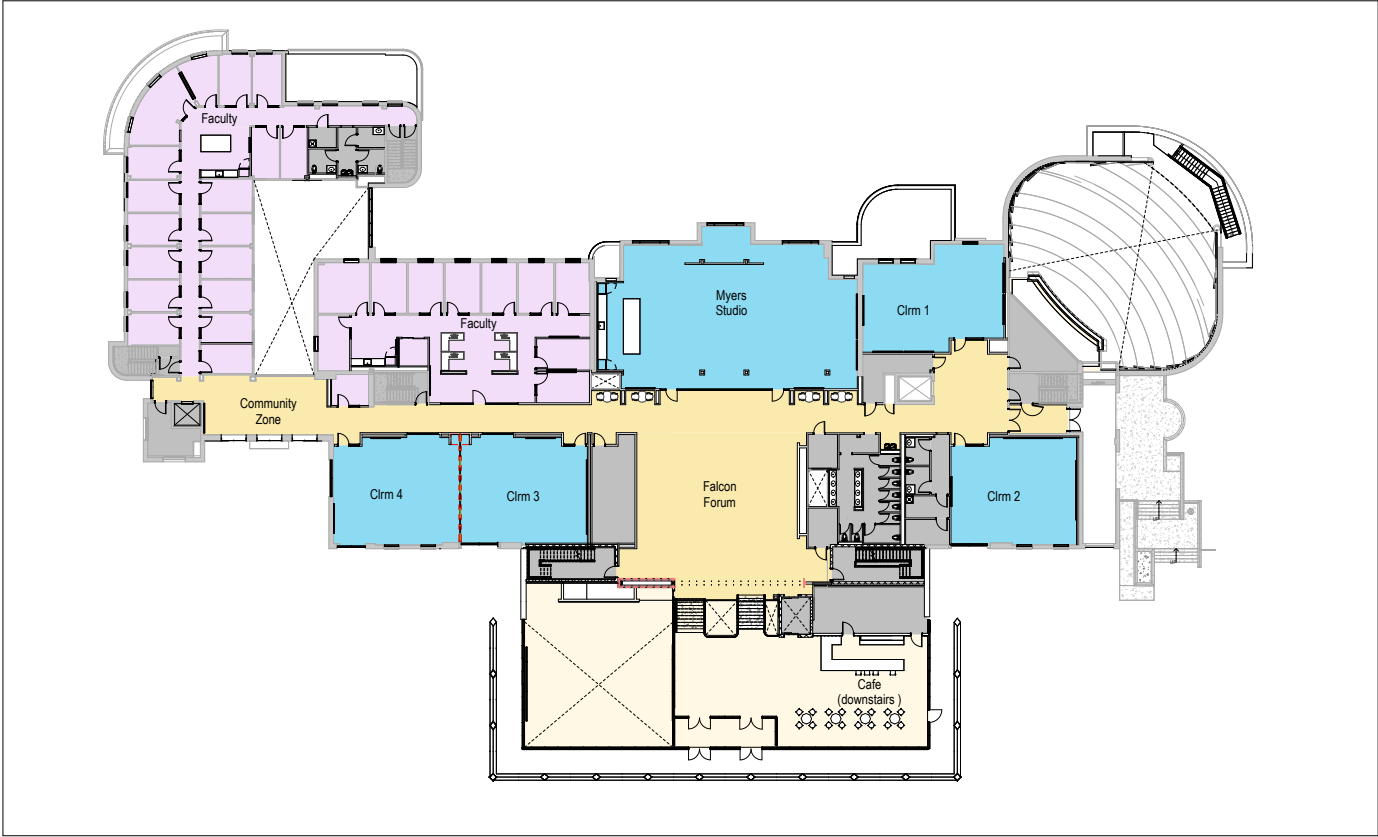
THE INNOVATION PAVILION

With its bold architectural presence and dramatic entrance, the expanded space will showcase the vibrant activity and integrated technology inside.

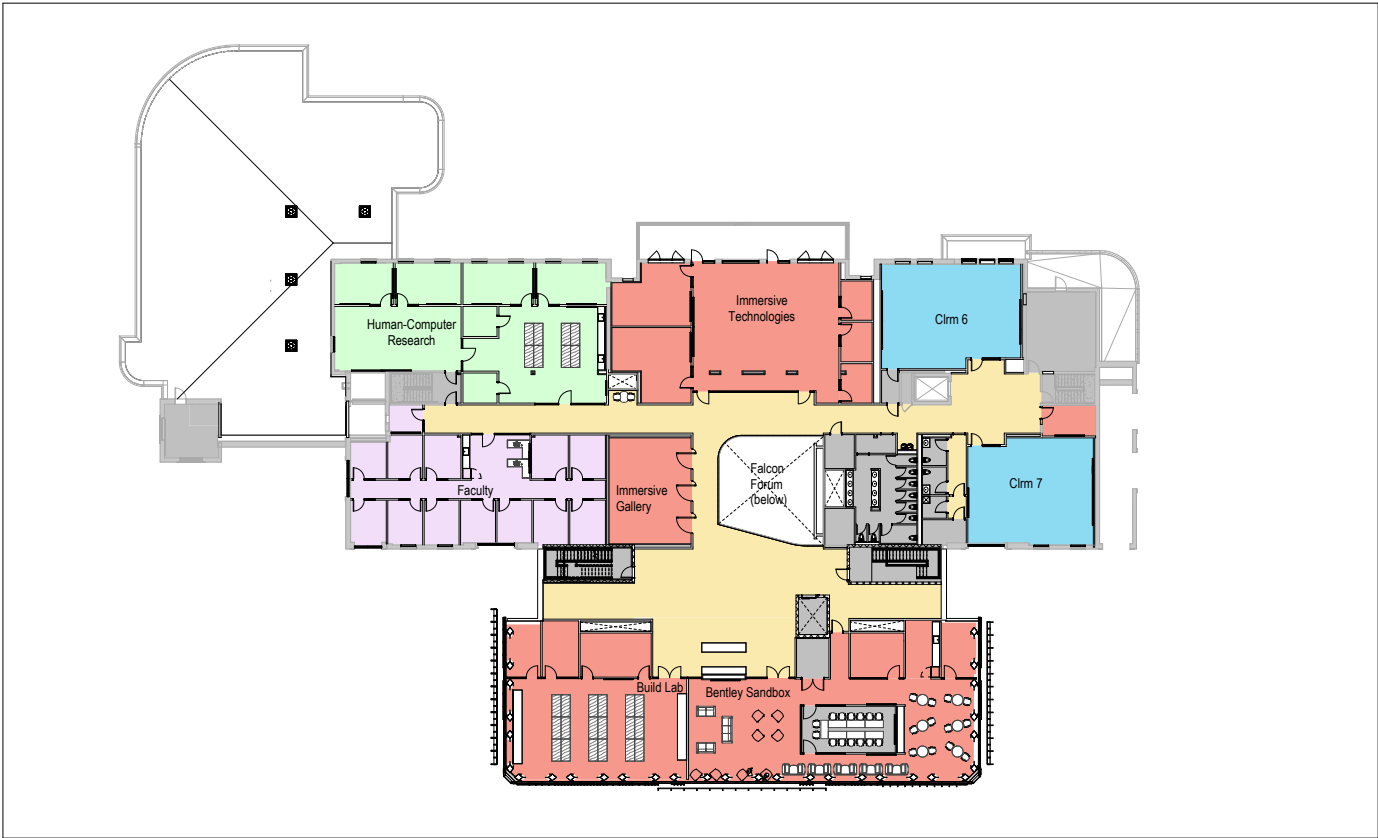




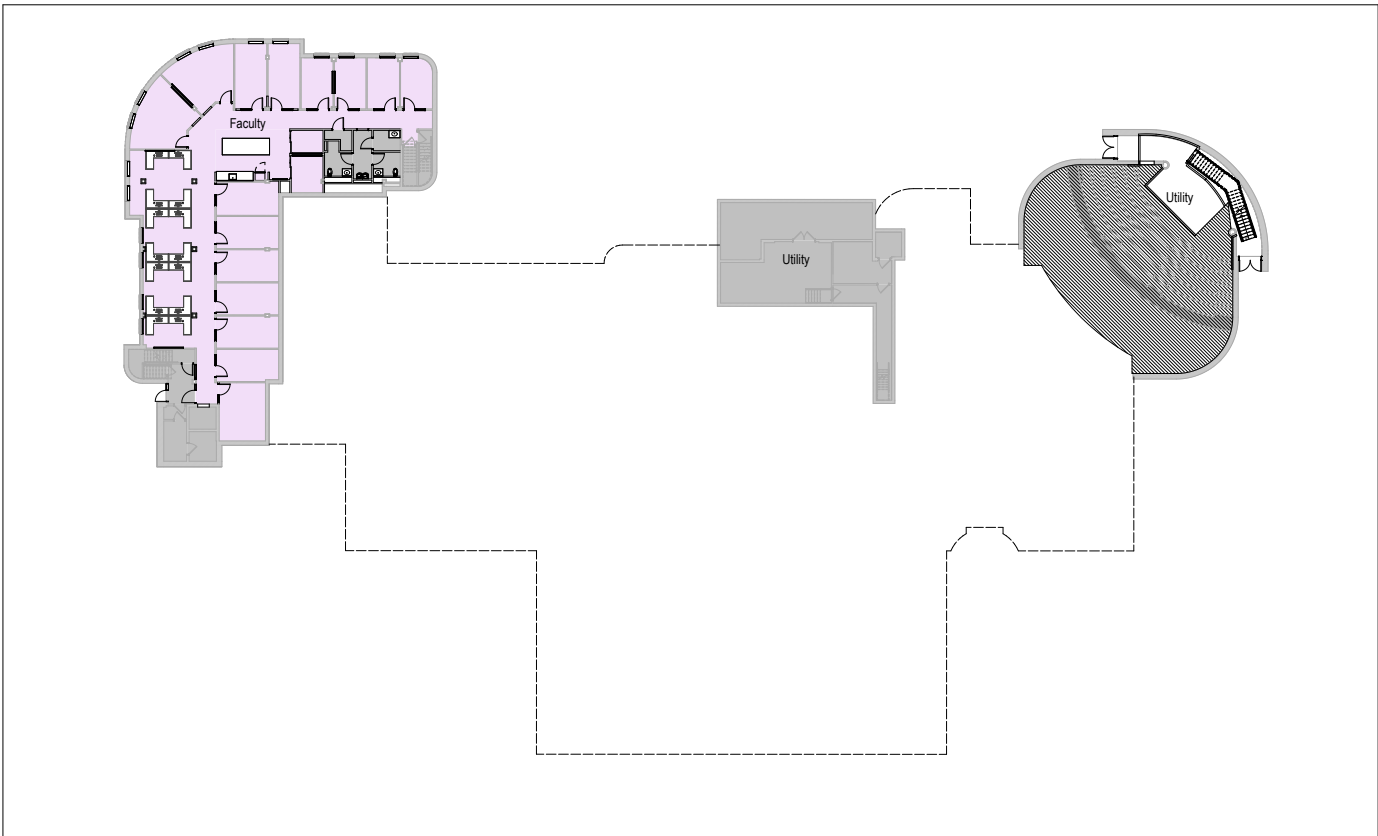
LEVEL 1 FLOOR PLAN
11/11/2024



LEVEL 2 FLOOR PLAN
11/11/2024



LEVEL 3 FLOOR PLAN
11/11/2024



LEVEL 0 FLOOR PLAN
11/11/2024



Invest in Tomorrow's Solutions Today

Investing in the people, programs and priorities to fuel this progress isn't just good for Bentley, it's good for the world.

And that's just good business.

For more information on how your support can ignite innovation and elevate entrepreneurship for a new generation of business leaders, contact:

Chris Grugan, *Vice President, University Advancement*
cgrugan@bentley.edu | 781-891-2818

